

OBLO Living Smart Plug B1100

SPW35Z-D0



USER MANUAL

OBLO
LIVING

OBLO Living LLC
Narodnog Fronta 23a
21000 Novi Sad
Serbia
www.obloiving.com
info@obloiving.com

Congratulations and thank you for purchasing OBLO Living Smart Plug device. Below you will find useful operating guidelines.

DEVICE DESCRIPTION

OBLO Living Smart Plug (Figure 1) is wirelessly controlled electronic switch with overload protection and power measurement features. The device is compliant with ZigBee Home Automation (ZHA) 1.2 and is guaranteed to function with any ZHA 1.2-compliant system. In addition, it allows pairing with any device supporting ZHA binding feature.

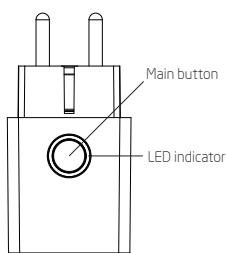


Figure 1

OBLO Living Smart Plug has CEE 7/3 socket (German "Schuko"; Type F) and CEE 7/7 plug as shown in Figure 2.

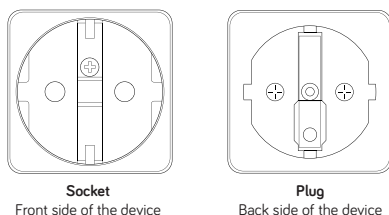


Figure 2

The device is equipped with overload protection circuit that automatically switches off the power if power consumption exceeds factory defined limit of 3500W.

MODES OF OPERATION

The device supports two modes of operation:

- NORMAL mode
- SETUP mode

NORMAL Mode

After powering up the device enters NORMAL mode. In this mode the end user is able to:

- Manually control power via main button
- Wirelessly control power from other device within the same ZigBee network

In NORMAL mode LED indicates active power consumption of the device attached to Smart Plug (see Table 1).

| Color | Active Power [W] |
|---------|------------------|
| White | 0 (OFF State) |
| Yellow | 0% |
| Green | 10% |
| Cyan | 30% |
| Blue | 50% |
| Magenta | 80% |
| Red | 100% |

Table 1: LED indications

SETUP Mode

In SETUP mode by using main button the end user is able to:

- Join Smart Plug into existing ZigBee network
- Create ZigBee network so the other devices could join it
- Pair Smart Plug with other devices from the same ZigBee network
- Set custom power limit in addition to factory defined limit
- Perform factory reset

Switching between Modes

The device enters SETUP mode if the end user holds down main button until LED indicator goes blue (approx. 2-3 seconds). After releasing main button LED indicator remains blue up until the device is in SETUP mode.

If there is no action from the user within 5 seconds Smart Plug automatically switches back to NORMAL mode and LED indicates active power consumption of the device attached to it.

PREPARATION

After powering up for the first time (inserting into socket) Smart Plug is not associated with any ZigBee network. In order to enable wireless control feature Smart Plug has to be added to the existing ZHA 1.2-compliant system or paired with any device supporting ZHA binding feature.

ADD SMART PLUG TO THE GATEWAY'S NETWORK

In order to add Smart Plug to existing ZHA 1.2-compliant system please follow next steps:

1. On the gateway's side initiate device inclusion procedure according to gateway manufacturer's instructions
2. Switch Smart Plug device to SETUP mode
3. Press main button once to start joining procedure. During joining procedure LED will blink red
4. After successful joining, LED will blink green no longer than 3 minutes

PAIR SMART PLUG WITH OTHER DEVICE

In order to pair Smart Plug with device supporting ZHA binding feature please follow the procedure below. Since Smart Plug is actuator device, the procedure assumes that pairing device has a role of initiator. For additional information about other pairing options please contact our technical support at support@obloiving.com.

1. Create ZigBee network on Smart Plug device:
 - 1) Switch Smart Plug device to SETUP mode
 - 2) Press main button 4 times to create ZigBee network
 - 3) After successful operation, LED will light green for 2 seconds
2. Add pairing device to Smart Plug's ZigBee network:
 - 1) Switch Smart Plug device to SETUP mode
 - 2) Press main button once to open Smart Plug's ZigBee network. While ZigBee network is open LED will blink green
 - 3) Start joining procedure on pairing device according to manufacturer's instructions
 - 4) Upon successful joining there should be visual indication on pairing device (see manufacturer's instructions)
3. Pair Smart Plug as a target with the device as an initiator:
 - 1) Switch Smart Plug device to SETUP mode
 - 2) Press main button 3 times to start pairing of Smart Plug as a target. During pairing procedure LED will blink blue.
 - 3) Start pairing procedure as an initiator on the device according to manufacturer's instructions
 - 4) Upon successful pairing Smart Plug switches to NORMAL mode and the end user is able to control it from paired device

USER DEFINED POWER LIMIT

In SETUP mode, in addition to factory defined power limit of 3500W the end user is able to define custom power limit in the range 10-3500W.

Setting user defined power limit

Please follow next steps for setting custom power limit:

1. Attach the device with desired power consumption to Smart Plug
2. Make sure that Smart Plug is switched ON
3. Switch Smart Plug to SETUP mode
4. Press main button 5 times to set new power limit that is actually current power consumption of the device attached to Smart Plug
5. After successful operation, LED will blink green 3 times

Resetting user defined power limit

Please follow next steps for reset custom power limit to default value:

1. Make sure that there is no device attached to Smart Plug
2. Switch Smart Plug to SETUP mode
3. Press main button 5 times to reset power limit to its default value (3500W)
4. After successful operation, LED will blink green 3 times

FACTORY RESET

In order to restore your Smart Plug to default factory settings please follow next steps:

1. Switch Smart Plug device to SETUP mode
2. Press main button 7 times to reset the device to factory settings
3. After successful operation, LED will blink red for 2 seconds

BUTTONS/FUNCTIONS

| Mode | Button Operation | Action | LED Indication |
|--------|----------------------------------|------------------------------------|---------------------|
| NORMAL | 1 x short press | Power ON/OFF | 1 x blink green |
| | Long press (more than 2 seconds) | Enter SETUP mode | Blue |
| SETUP | 1 x short press | Join the gateway's network | Blink red |
| | | Open ZigBee network | Blink green |
| | 2 x short press | Pair as initiator | Blink yellow |
| | 3x short press | Pair as target | Blink blue |
| | 4 x short press | Create own ZigBee network | Green for 2 seconds |
| | 5 x short press | Set/reset user defined power limit | 3 x blink green |
| | 7 x short press | Factory reset | Red for 2 seconds |

TECHNICAL DATA

| | |
|------------------------|----------------------------|
| Communication Protocol | ZigBee |
| Range | Up to 15m |
| Operating Temperature | 0 - 40 °C |
| Protection Degree | IP20 |
| Power | 220V AC, 50Hz |
| Maximum Load | 16A 220V AC |
| Dimensions | W x H x D: 44 x 44 x 86 mm |

ATTENTION!

⚠ WARNING! Improper use or installation of the device can cause SERIOUS INJURY, DEATH or LOSS/DAMAGE OF PROPERTY.

⚠ WARNING! Using Smart Plug device in a manner other than outlined in this document is not allowed.

⚠ WARNING! Turning the device on/off more often than once in two seconds can shorten its lifetime.

⚠ CAUTION! Do not try to open or to repair the device by yourself, otherwise SERIOUS INJURY, DEATH or LOSS/DAMAGE OF PROPERTY is possible.

⚠ IMPORTANT! Do not overload the device above the recommended limit.

DECLARATIONS OF CONFORMITY

Hereby, OBLO Living LLC declares that Smart Plug device is in compliance with the essential requirements and other relevant provisions of following European directives:

- Council Directive LVD (2014/35/EU)
- Council Directive EMC (2014/30/EU)
- Council Directive RED (2014/53/EU)
- Council Directive ROHS (2002/95/CE)